

RIJKS MUSEUM



RESEARCH IN THE RIJKSMUSEUM

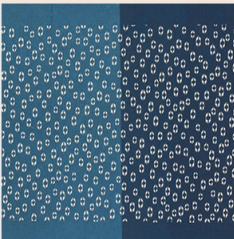
With the stars brightening the winter sky, we approach the end of 2025 and look back on a year of inspiring visits, collaborations, and developments. In this newsletter, you'll find the latest updates on recent acquisitions, FAIR data, and more.



OPERATION NIGHT WATCH & FAIR DATA

There is much more to *The Night Watch* than meets the eye: the painting lies at the centre of a web of data, including documentation, conservation records, and high-resolution photographs. Information specialist Paolo Rossini explains how, through the project Operation Night Watch, the Rijksmuseum is making its research data FAIR (Findable, Accessible, Interoperable, Reusable).

[Read more](#)



REPLACING APIS

With our new data services now firmly in place, Collection IT is retiring several older APIs and replacing them with new ones.

[Learn more](#)

NEW ACQUISITIONS

Discover historical painting recipes and techniques, some dating back to the 16th century, in recently acquired artists' manuals.

[Read more \(Dutch\)](#)



RIJKSMUSEUM X GETTY HACKATHON

In December 2025, the Digital team (Getty Trust) and Collection IT (Rijksmuseum) will collaborate on a linked.art search feature.

[Read more on our blog soon](#)

OPENING HOURS

On December 25 & 26, 2025, and January 1, 2026, the Research Library and Study Room will be closed. Research Services wishes you a Happy New Year!



Happy new year!



RIJSMUSEUM

Studiezaal@rijksmuseum.nl

Founder



PHILIPS

Main sponsors

VRIENDEN
LOTERIJ

ING

kpn

You have subscribed to the Rijksmuseum newsletter. If you want to change your preferences, [click here](#).